



INFORMATION

ON NAVIGATION

IN THE PONTINE ISLAND

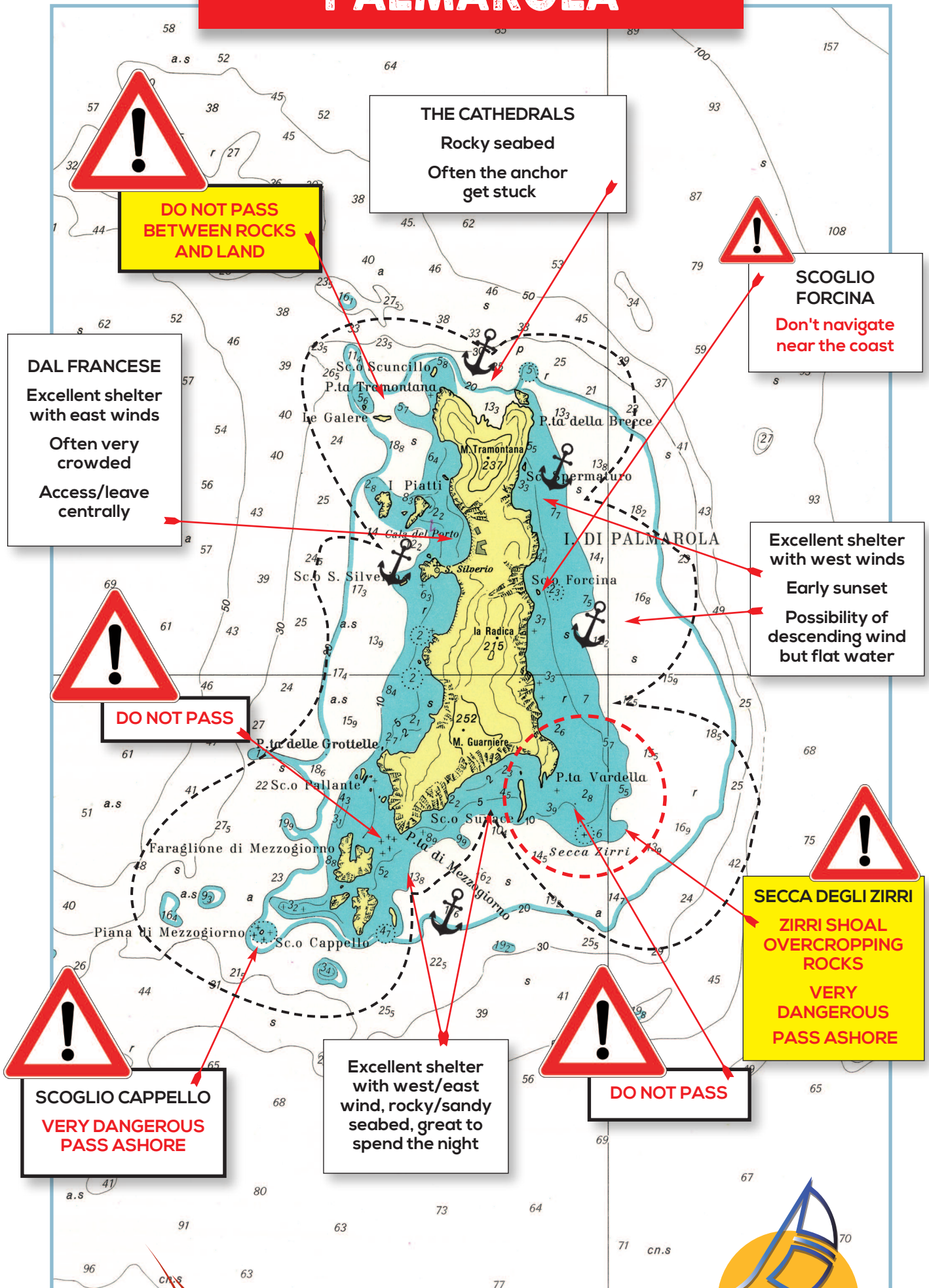


punto  **cospicuo**
Sail at work




SAILING IN ITALY
› CHARTER ‹

PALMAROLA



**DO NOT PASS
BETWEEN ROCKS
AND LAND**

THE CATHEDRALS
Rocky seabed
Often the anchor
get stuck



SCOGLIO FORCINA
Don't navigate
near the coast

DAL FRANCESE
Excellent shelter
with east winds
Often very
crowded
Access/leave
centrally

Excellent shelter
with west winds
Early sunset
Possibility of
descending wind
but flat water



DO NOT PASS



SECCA DEGLI ZIRRI
ZIRRI SHOAL
OVERCROPPING
ROCKS
VERY
DANGEROUS
PASS ASHORE



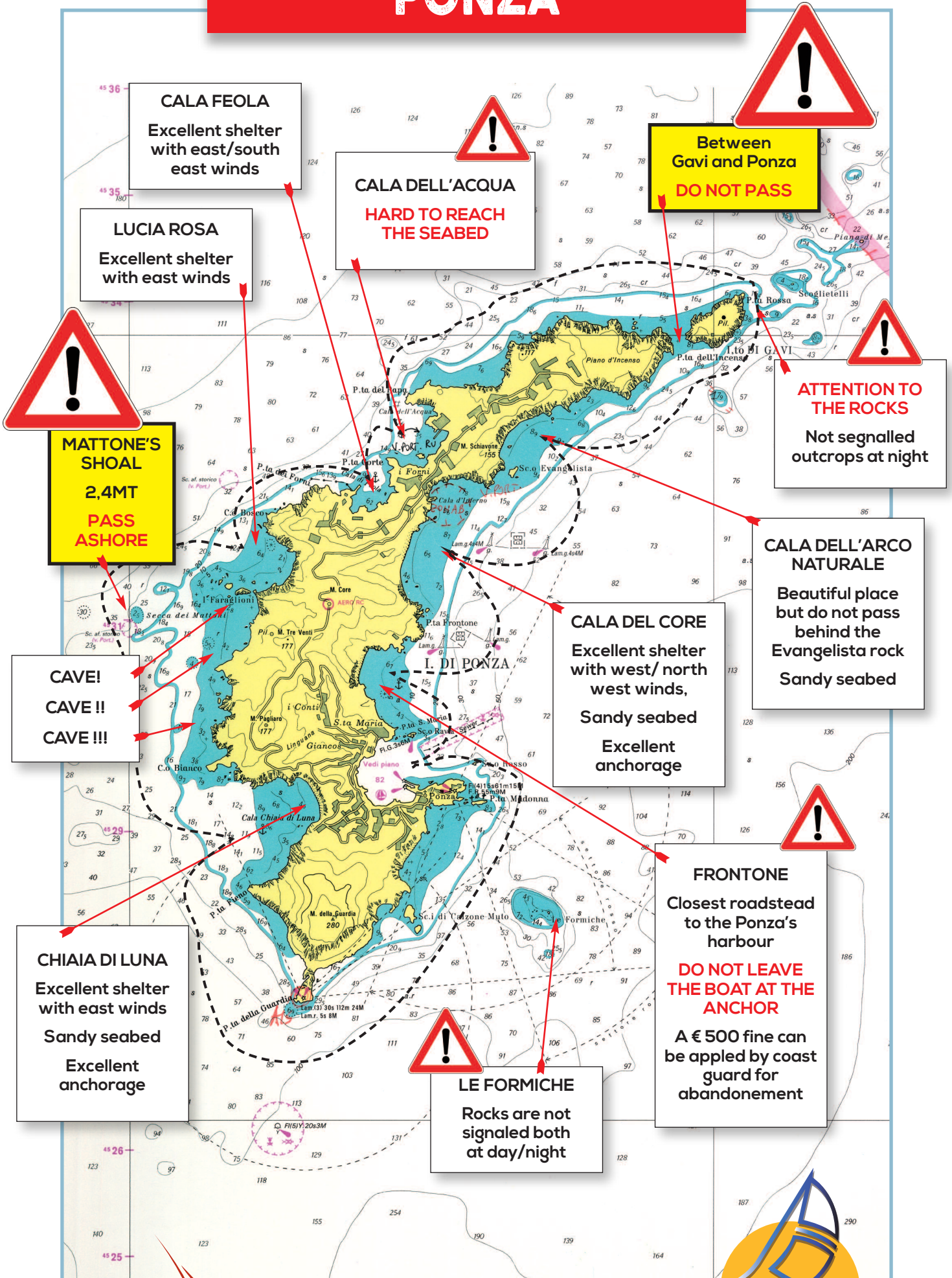
SCOGLIO CAPPELLO
VERY DANGEROUS
PASS ASHORE

Excellent shelter
with west/east
wind, rocky/sandy
seabed, great to
spend the night



DO NOT PASS

PONZA



CALA FEOLA
Excellent shelter
with east/south
east winds

LUCIA ROSA
Excellent shelter
with east winds

CALA DELL'ACQUA
**HARD TO REACH
THE SEABED**

**Between
Gavi and Ponza
DO NOT PASS**

**MATTONE'S
SHOAL
2.4MT
PASS
ASHORE**

**ATTENTION TO
THE ROCKS**
Not signalled
outcrops at night

**CAVE!
CAVE!!
CAVE!!!**

**CALA DELL'ARCO
NATURALE**
Beautiful place
but do not pass
behind the
Evangelista rock
Sandy seabed

CALA DEL CORE
Excellent shelter
with west/ north
west winds,
Sandy seabed
Excellent
anchorage

CHIAIA DI LUNA
Excellent shelter
with east winds
Sandy seabed
Excellent
anchorage

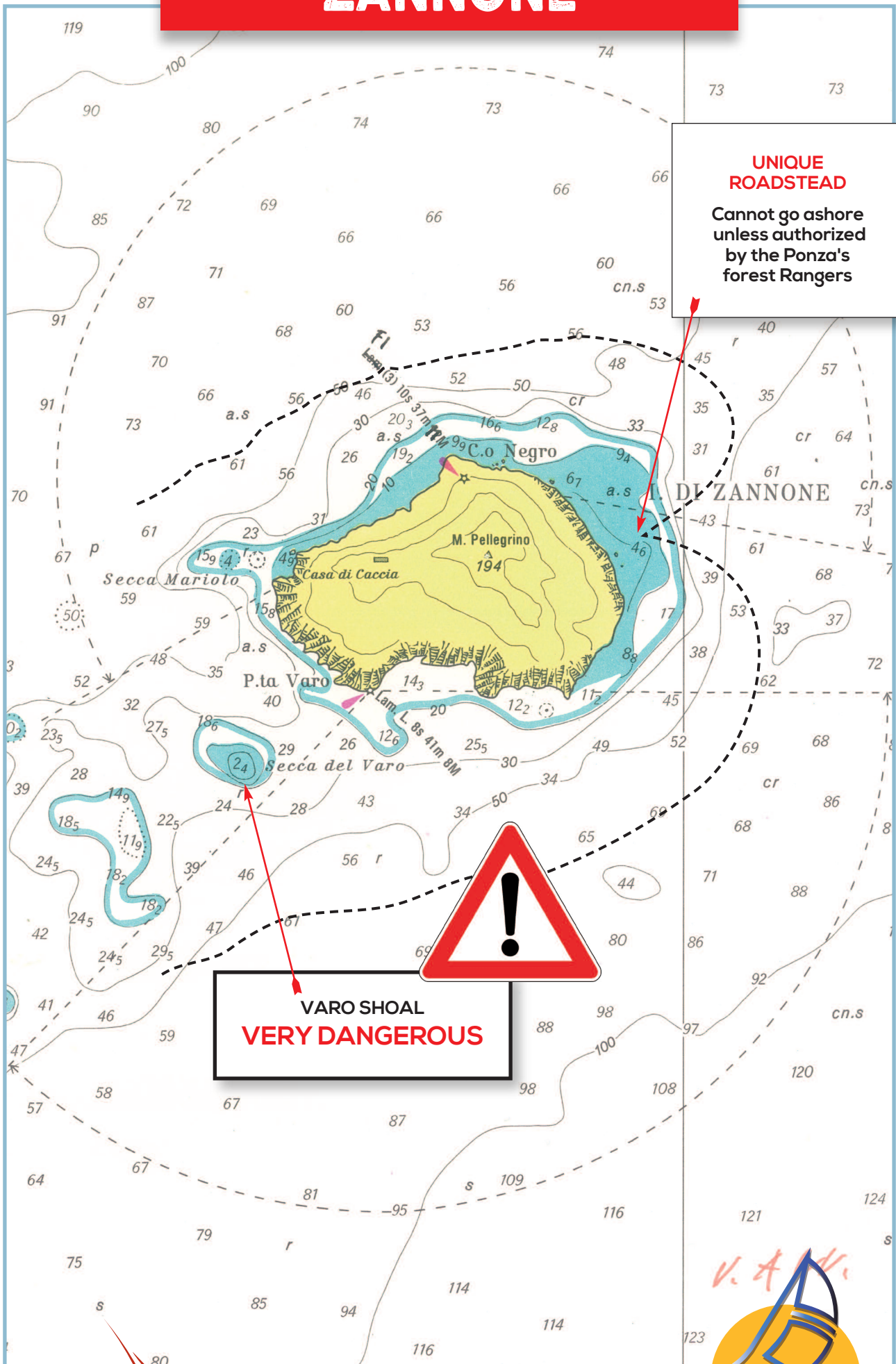
FRONTONE
Closest roadstead
to the Ponza's
harbour
**DO NOT LEAVE
THE BOAT AT THE
ANCHOR**
A € 500 fine can
be applied by coast
guard for
abandonment

LE FORMICHE
Rocks are not
signalled both
at day/night

ZANNONE

UNIQUE ROADSTEAD

Cannot go ashore unless authorized by the Ponza's forest Rangers



VARO SHOAL
VERY DANGEROUS

VENTOTENE



**SCONCIGLIE
ROCKY STAND
VERY DANGEROUS**

Pass at north to
avoid the dangers
obstacles

PORTO NUOVO

Mooring on the wall
is hard and dimly lit

With levanter boat sways
dangerously

We advise mooring
at the floating jetty
"Modesto"

Is permitted
anchorage in front
of the roman port
SAND

Access and anchor in the
middle of the bay and
leave the covee only and
always like you got in
(in the middle)

CALA NAVE

Defined by buoys
for bathers

**CANNOT STICK
TO THE BUOY**

I. DI VENTOTENE

**NATURAL
RESERVE
CANNOT
NAVIGATE HERE**

ROCKY SEABED

Keep away
from the coast

**RISK OF
ANCHOR
STRANDING**



TO VISIT SANTO STEFANO

We recommend to leave the boat in the
harbour and go with rafts, leaving from
Ventotene

HOME PORT MARINA DI NETTUNO (ROME)



HOW TO ARRIVE ON NETTUNO:

PLANE: Roma Fiumicino Airport or Rome Ciampino - Private transfer "Sailing in Italy Charter" € 30 per person min 4pax

AUTO: Take the SS148 (Pontina), exit Campoverde - Direction Nettuno

TRAIN: Station: Nettuno, 5m in walk to the Marina

OUR OFFICE: BOX 9/E

At the arrival please contact for information about check-in:

Base Manager Mr. Claudio Gastaldi (+39 328 4563273)

Booking Manager Mr. Francesco De Luca (+39 334 6725464)

INFORMATION ABOUT THE PORT:

Seabed: sandy, 3m in the input channel, within ranges from 3 to 5m deep.

VHF eh 09 (h24 service)

Berths: about 1000

Winds Prevailing south-east, south-west

Nearest safe: Port of Anzio



OLD TOWN

For those who wish to stay overnight prior to departure or after the vacation, don't miss the chance to visit the old town of Nettuno, which is very close to the Marina, and enjoy the natural and architectural beauty of this ancient seaside resort.

PONTINE ISLANDS

The Archipelago of the Pontine Islands is just a few miles away from the coast of the Lazio region, and therefore very easy to reach (36 miles away from Nettuno and only 21 miles from San Felice Circeo). It has nevertheless maintained its intact and uncontaminated nature and sea.

Since ancient times, as shown by many roman and pre-roman remains, this group of islands has been considered among the most suggestive and enchanting islands of the Mediterranean. This archipelago is formed by 6 islands of volcanic origin with a variety of landscapes, bays and coves of exceptional beauty. It is constituted of two groups which are 22 miles away one from the other. The first one is formed by four islands south-west of Circeo: Ponza, Gavi, Zannone and Palmarola, while the second one, more south-east oriented compared to the first, comprehends Ventotene and Santo Stefano.

The Base: Marina di Nettuno (Rome) 41°27'15N, 12°39'60E
How to get there:

- by flight in the intercontinental airport of Rome "Leonardo da Vinci" 1 hour from the base
- by train 1 hour from the central station "Termini" of Rome to the base
- by car 50 minutes far from the base from Roma

PONZA



Its port can harbour up to 200 boats on eight floating pontoons, privately managed and equipped with water and electricity sockets. During peak season, you can anchor in the roadstead between the pontoon where the Restaurant Gennarino is and the rock called Ravia. On land you'll find the following services: fuel refuelling - grid and slipway - moving crane and laying-up - engine and electrical repairing - mooring and scuba diving services - repairing for hulls in wood or fiberglass.

The whole island is fringed by inlets and coves for sheltering depending on the direction of the winds:

- Cala Inferno and Ansa dello Schiamone protected from SW to NW, from Cala Inferno you can climb up a stairway cut in tufa stone and reach the little town of Le Forna, overlooking Cala di Feola on the west coast of the island, where you will discover many typical restaurants.
- Cala di Feola and Cala dell'Acqua, protected from the winds of the 1st, 2nd and 3rd quadrants; on the southwest side of Cala di Feola, you'll find a little marina or you can anchor in the roadstead of the little harbour. Here you will find the natural pools, excavated by the sea in the tufa stone. At Cala dell'Acqua you can find refuge from the Mistral, sheltering behind Punta del Papa.
- Cala di Lucia Rosa, is protected from winds of the 1st and 2nd quadrants. This coastline is particularly beautiful and is characterized by a series of grottoes and rocks.
- Chiaia di Luna, excellent refuge from the east wind and the others of the 1st quadrant; good sandy seabed for anchorage. From this marvellous beach you can reach the town of Ponza walking through a tunnel excavated by the ancient Romans.

PALMAROLA

Is the most western island of the archipelago; many dangerous points surround its coasts but you'll be able to find great places to anchor.

We suggest you visit Punta Tramontana, from where you can admire a very beautiful bay called "The Cathedral" because of its cliff falling vertically to the sea and the big bays which remind us of that image.

At Cala del Porto you'll find, during the summer, a small restaurant on the shore.



VENTOTENE

The old harbour, Porto Nicola, has been excavated by the ancient Romans, as well as the bollards and the portico running along the quay, still perfectly functioning. At the entrance of the harbour, and more precisely, at the base of the tufa rock which is located where the lighthouse is, you can recognize the ancient Roman fishpond for fish raising, provided with an ingenious system for water recycling through pipes flowing into two covered pools.

The island saves other historical vestiges among which the remains of a great roman construction towards Punta Eolo: the Borbonic stairway and the fortress. Besides the old harbour and adjacent to it, towards north, lies the new port, Porto Nuovo (Cala Rossano) protected by a quayed jetty. The port offers various services such as: water, electricity and food supply, ice and marine shops. Other safe bays are:

- Cala Parata Grande protected from east winds. Though it is the only natural refuge from the southeast wind called "libeccio", you need to consider that we are in the B zone of the natural marine reserve and therefore all anchorage and motor navigation is forbidden.
- Cala Nave and Parata della Postina protected from winds of the 4th quadrant, C zone of the natural marine reserve, where you can anchor on the outside of the four buoys which delimit the reserved area.



USEFUL NUMBERS CONTACTS

OFFICE +39 06.800.799.82

CLAUDIO +39 328.456.32.73

FRANCESCO +39 334.672.54.64

IONUT +39 380.758.5276

GIULIA +39 349.633.74.44

TAXI FRONTONE +39 389.156.61.76 (WALID)

PONTILE PONZA SANTA MARIA +39 349.510.55.94 (LUCIO)

PORTO NUOVO VENTOTENE +39 348.252.59.82 (MODESTO)

PORTO ROMANO VENTOTENE +39 0771.851.22 (ENRICO)

GUARDIA COSTIERA 1530 VHF 16

COAST GUARD VHF 16 - PH +39.06.6522222

CIRCO MARE PONZA +39 0771.800.27

LOCAMARE VENTOTENE +39 0771.85291

GAZOLINE MARINA DI NETTUNO +39 988.25.56

VHF MARINA DI NETTUNO CH 9